

PROJECT NAME:

Construction of 2000 living units and service buildings

DATE OF AWARD: 26 November 2007

CLIENT'S NAME: Housing Infrastructure Board, Tripoli, Libya

PROJECT VALUE: LYD 220,000,000.00

PROJECT LOCATION: AL Khoms, Libya

PROJECT DURATION: 36 Months

Project Description:

The project comprises of design and construction of 2000 living units in medium rise 2-4 storey buildings. The proposed development area is 120 hectares, situated at a distance of 250 m from the Mediterranean shoreline.

Urban plan includes service buildings, public buildings, parks and roads. Utilities like water, power and sewerage for the development project are integrated with the regional infrastructure.



Urban plan includes service buildings, public buildings, parks and roads. Utilities like water, power and



Urban plan includes service buildings, public buildings, parks and roads. Utilities like water, power and



Urban plan includes service buildings, public buildings, parks and roads. Utilities like water, power and



Urban plan includes service buildings, public buildings, parks and roads. Utilities like water, power and

PROJECT NAME:

Construction of 2000 living units and service buildings

DATE OF AWARD: 26 November 2007

CLIENT'S NAME: Housing Infrastructure Board, Tripoli, Libya

PROJECT VALUE: LYD 220,000,000.00

PROJECT LOCATION: AL Khoms, Libya

PROJECT DURATION: 36 Months



Urban plan includes service buildings, public buildings, parks and roads. Utilities like water, power and

Project Description:

The project comprises of design and construction of 2000 living units in medium rise 2-4 storey buildings. The proposed development area is 120 hectares, situated at a distance of 250 m from the Mediterranean shoreline.

Urban plan includes service buildings, public buildings, parks and roads. Utilities like water, power and sewerage for the development project are integrated with the regional infrastructure.



Urban plan includes service buildings, public buildings, parks and roads. Utilities like water, power and



Urban plan includes service buildings, public buildings, parks and roads. Utilities like water, power and sewerage for the development project are integrated with the regional infrastructure.

PROJECT NAME:

Construction of 2000 living units and service buildings



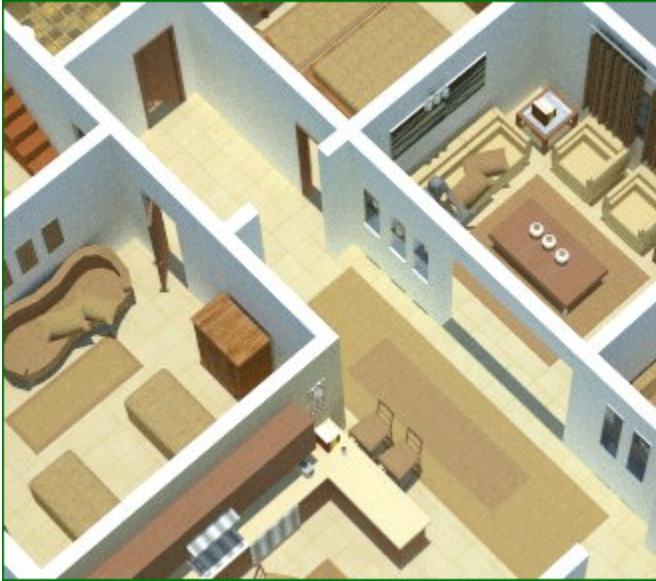
Urban plan includes service buildings, public buildings, parks and roads. Utilities like water, power and sewerage for the development project are integrated with the regional infrastructure.



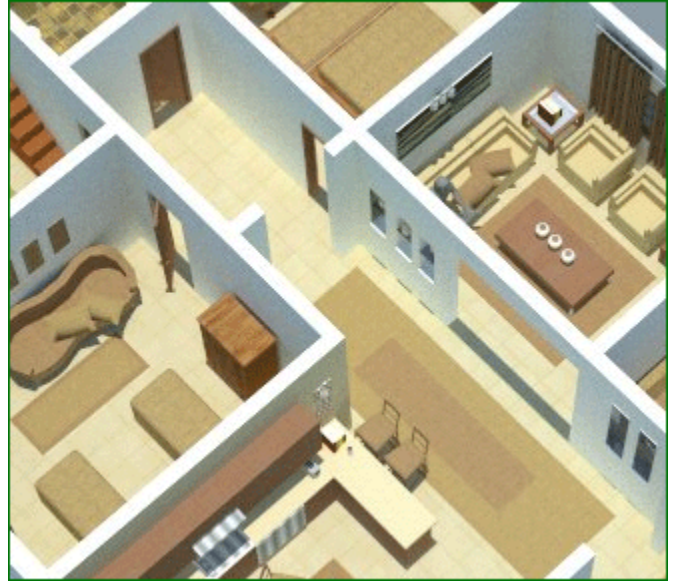
Urban plan includes service buildings, public buildings, parks and roads. Utilities like water, power and sewerage for the development project are integrated with the regional infrastructure.

PROJECT NAME:

Construction of 2000 living units and service buildings



Urban plan includes service buildings, public buildings, parks and roads. Utilities like water, power and sewerage for the development project are integrated with the regional infrastructure.



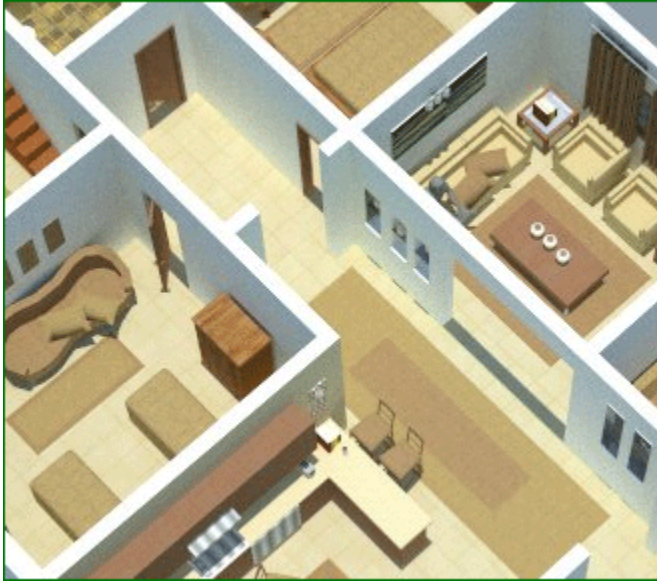
Urban plan includes service buildings, public buildings, parks and roads. Utilities like water, power and sewerage for the development project are integrated with the regional infrastructure.



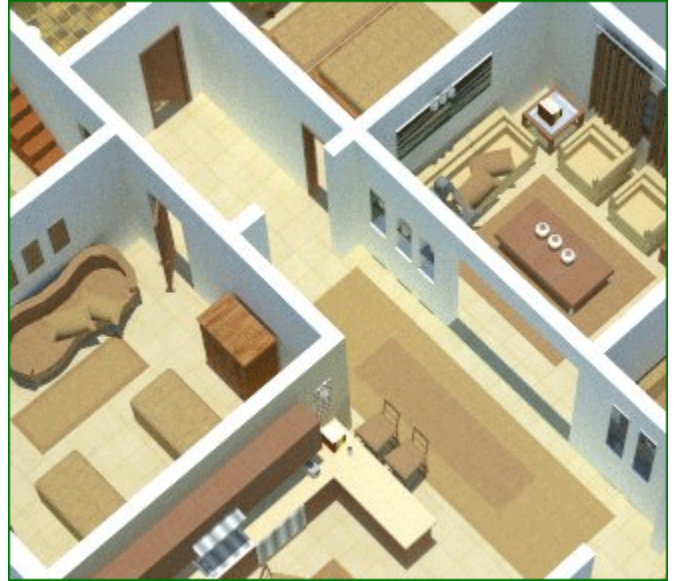
Urban plan includes service buildings, public buildings, parks and roads. Utilities like water, power and sewerage for the development project are integrated with the regional infrastructure.

PROJECT NAME:

Construction of 2000 living units and service buildings



Urban plan includes service buildings, public buildings, parks and roads. Utilities like water, power and sewerage for the development project are integrated with the regional infrastructure.



Urban plan includes service buildings, public buildings, parks and roads. Utilities like water, power and sewerage for the development project are integrated with the regional infrastructure.



Urban plan includes service buildings, public buildings, parks and roads. Utilities like water, power and sewerage for the development project are integrated with the regional infrastructure.



Urban plan includes service buildings, public buildings, parks and roads. Utilities like water, power and sewerage for the development project are integrated with the regional infrastructure.